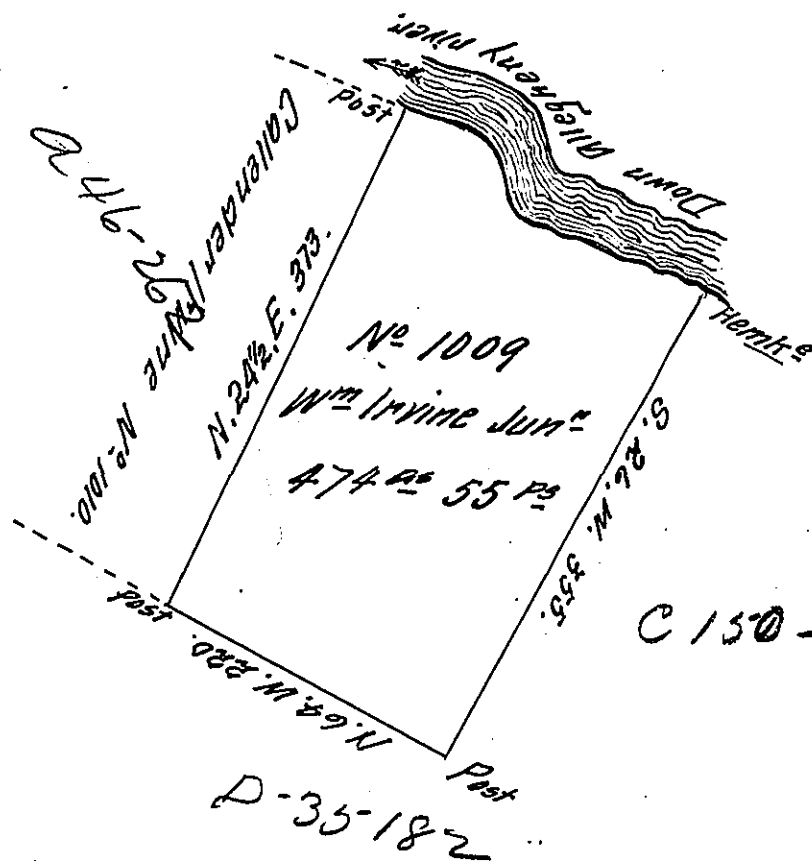


474.55  
448.29  
922.84



Up the Allegheny River

C 150 - 82

S 80 E 40  
 S 46 E 25  
 S 5 E 26  
 S 22 E 26  
 S 73 E 32  
 S 65 E 58 to the  
 Hemlock Corner  
 251

By Virtue of a warrant N<sup>o</sup> 1009 dated April 5<sup>th</sup> 1792 Surveyed  
 June 12<sup>th</sup> 1795 to William Irvine Jun<sup>r</sup> the above described  
 tract of Land Situate on the East side of Allegheny River  
 Northumb<sup>r</sup> County in District N<sup>o</sup> 6 Containing four hundred  
 and seventy four acres & allowance of six  $\frac{1}{2}$  Cent

Jr<sup>o</sup> Brodhead D.S.

Daniel Brodhead Esq<sup>r</sup> }  
 Surveyor General — }  
 now Lycoming County

IN TESTIMONY that the above is a copy of the original remaining on file in  
 the Department of Internal Affairs of Pennsylvania, made  
 conformably to an Act of Assembly approved the 16th day of  
 February, 1833, I have hereunto set my Hand and caused  
 the Seal of said Department to be affixed at Harrisburg,  
 this twenty-third day of January 1911.

*Henry Howell*

Secretary of Internal Affairs.